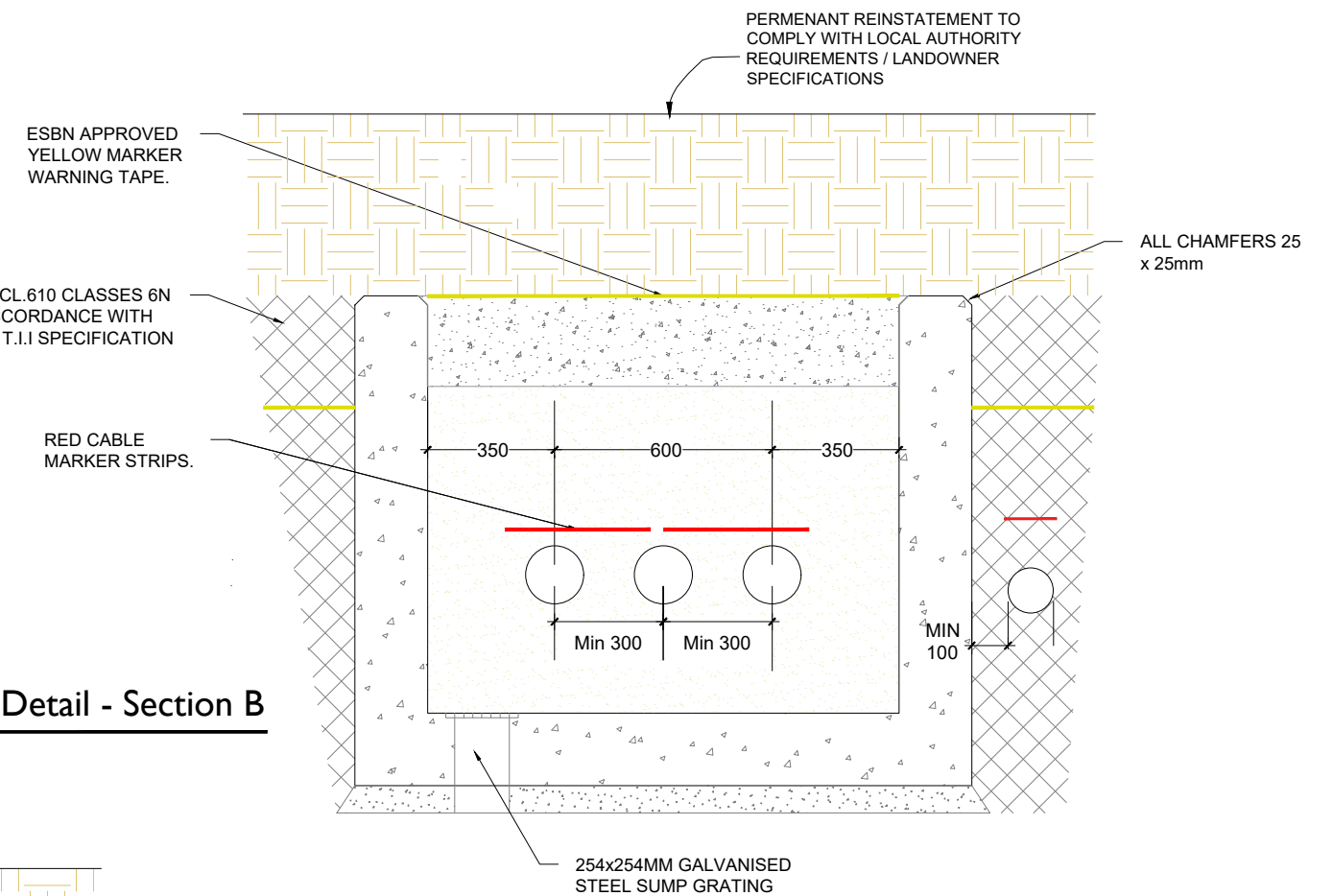


**Plan of Transition Chamber**

SCALE 1:20



**Transition Chamber Detail - Section B**

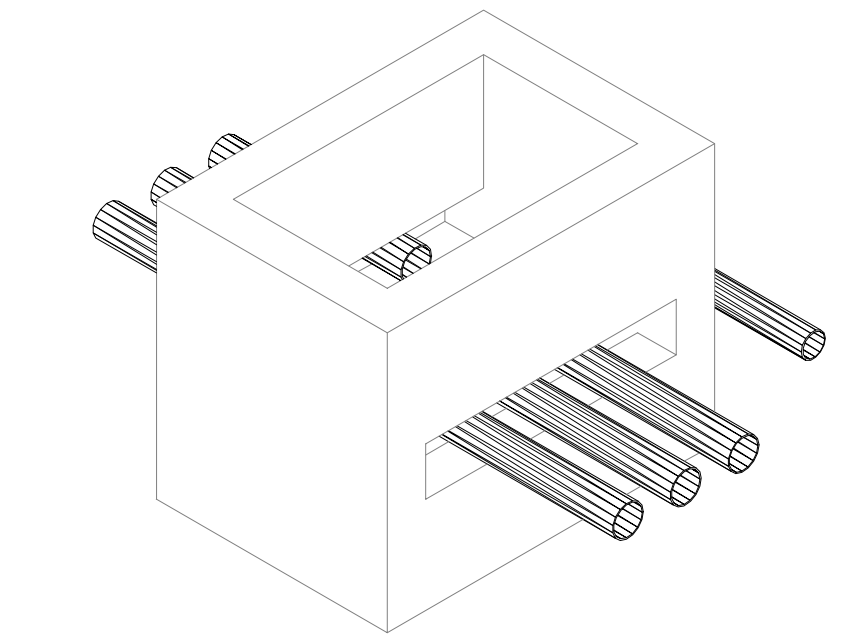
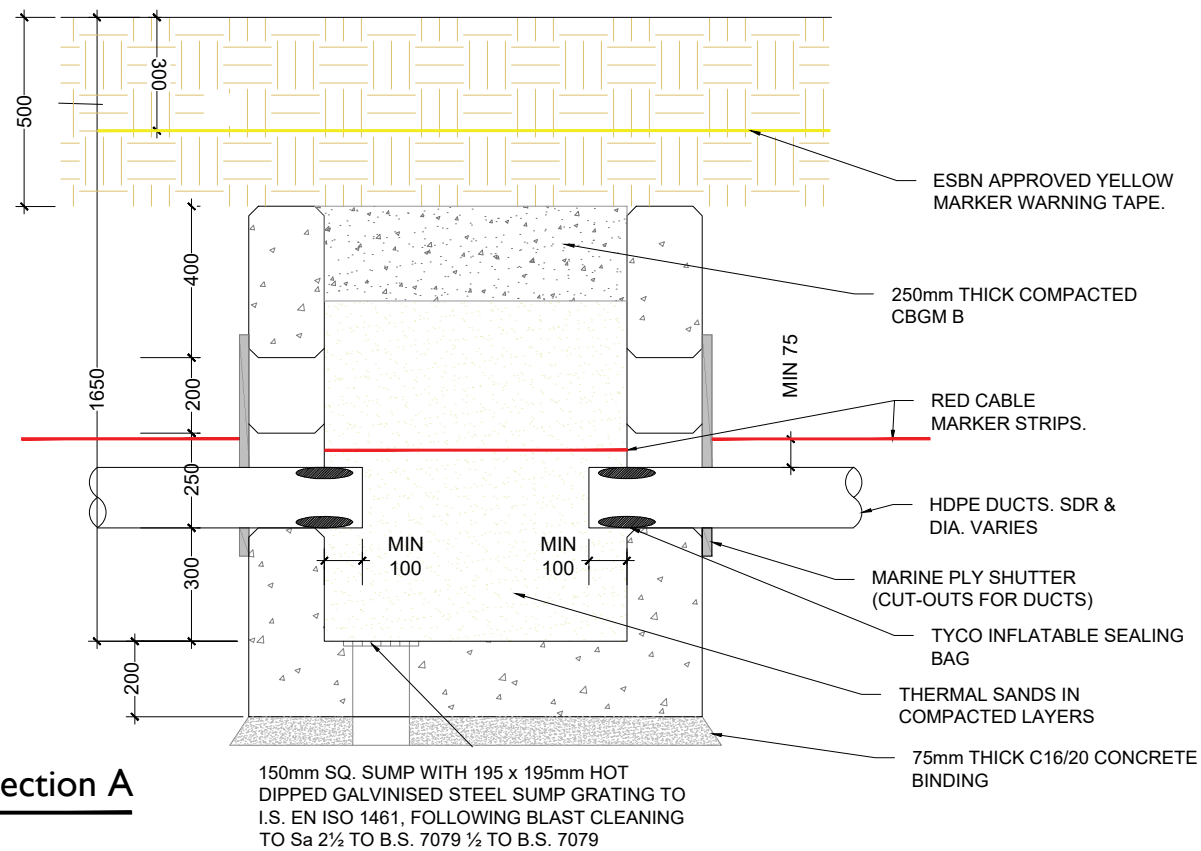
SCALE 1:20

NOTES:

1. ALL DIMENSION IN MILLIMETERS UNLESS OTHERWISE STATED,
2. TELCOM DUCTS NOT TO BE ROUTED THROUGH TRANSITION CHAMBER
3. IF TRANSITION CHAMBER IS USED TO INTERFACE WITH HDD SECTION, THEN THE TELECOMS DUCT SDR 17.6 SHOULD BE CHAMFERED WHEN COUPLED WITH SDR 11 DUCTS
4. REINSTATEMENTS TO COMPLY WITH REQUIREMENTS OF THE RELEVANT LOCAL AUTHORITY/ASSET OWNER
5. TEMPORARY SUPPORTS TO THE SIDES OF THE EXCAVATION MAY BE REQUIRED DEPENDENT ON THE SUBSOIL,
6. THE CONSTRUCTION SHOWN, IS APPLICABLE ONLY WHERE THE THE SUBSOIL AT FORMATION LEVEL EXCEEDS 100kN/m BEARING CAPACITY
7. ALL MATERIALS AND WORKMANSHIP TO BE IN ACCORDANCE WITH NRA/T.I.I. SPECIFICATION FOR ROADWORKS, MAY 2005 & SUBSEQUENT REVISIONS
8. THE CENTRE LINE OF THE DUCTS ENTERING THE CHAMBER SHALL BE ALIGNED WITH THE DUCTS ON THE OPPOSITE SIDE, SO THAT THE CABLE IS PULLED IN A STRAIGHT LINE
9. DUCTS SHALL APPROACH THE CHAMBER IN A STRAIGHT ALIGNMENT (HORIZONTAL OR VERTICAL) FOR A MINIMUM OF 3 METERS BEFORE THE WALL OPENING
10. CARRAIGEWAY COVERS AND FRAMES TO BE TO B.S EN 124.
11. THE DEPTH FROM GROUND LEVEL TO THE TOP OF WALL CONSTRUCTION SHALL BE 500mm IN CULVATED FIELDS AND GRASSED LANDS.
12. FINAL POSITION OF TRANSITION CHAMBERS SHALL BE AGREED WITH ESB/EIRGRID

**Transition Chamber Detail - Section A**

SCALE 1:20



**Isometric : Chamber Arrangement**

SCALE 1:20



Head Office  
Beenreigh,  
Abbeydorney,  
Tralee, Co. Kerry  
Ireland  
Tel: 00353 66 7135710



CLIENT  
**Carrownagowan Wind Farm**  
110kV Grid Connection

PROJECT NUMBER: 05-641  
SHEET NUMBER: 05641-DR-243

SHEET TITLE  
**Transition Chamber Details**

DRAWING STATUS  
**For Planning**

ISSUE/REVISION		
I/R	DATE	DESCRIPTION
P5	09.11.23	Issued for Planning
P4	01.06.23	Issued for Planning
P3	02.12.22	Issued for Planning
P2	19.05.20	Issued for Planning